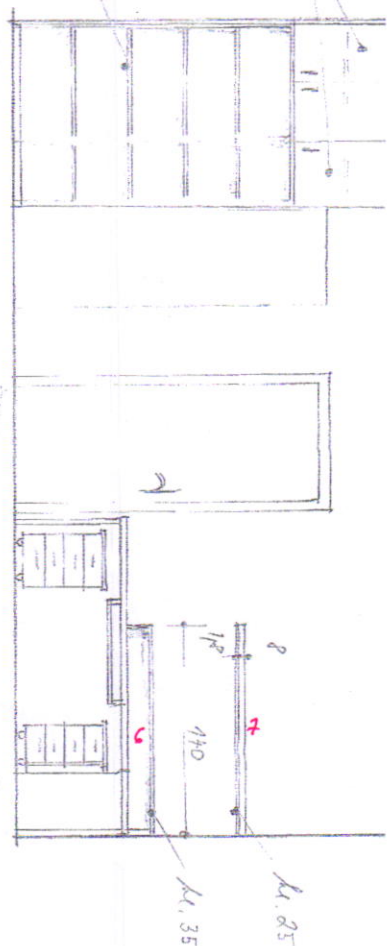
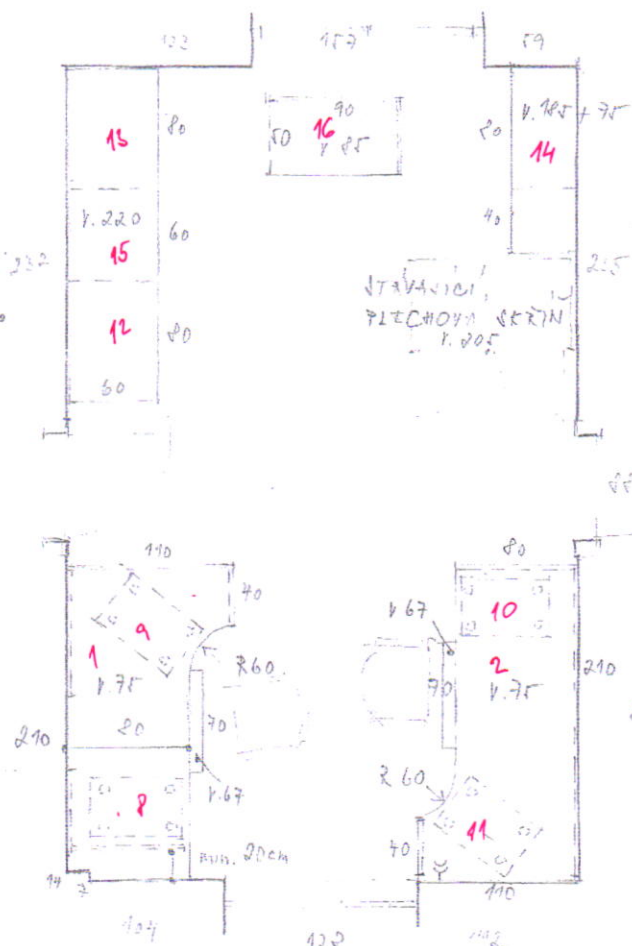
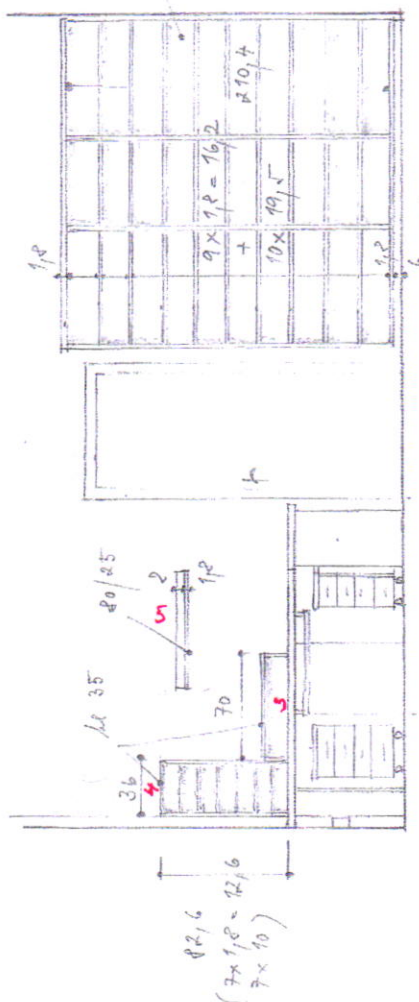


A hand-drawn floor plan of a room. In the center is a rectangular table with the number '35' written on its surface. To the left of the table is a tall, narrow rectangular cabinet. To the right of the table is another tall, narrow rectangular cabinet. The room is bounded by a vertical line on the left and a vertical line on the right, with a horizontal line at the bottom representing the front wall. The drawing is done in blue ink on a white background.

PEVNÁ POLICE
OSTATNÍ VOJNÍ

24119677E 1211E



LAD TREJEN H 1706
 PANTY FGV
 HRANY ABS - FYZIONOVANE 2mm
 OSTATNI 0,5mm
 U KRATNI REKTIK. NOZKY ZA SOCLEM (v 6cm)
 DIVEKA NALOZENNA
 DCHYKY "VICTIS"
 DIVEKA STOLO TL. 36mm
 KONTEJNERY 40/60 v. 65cm
 4 SHODNE ZAŠOVY, ZAMUKATELNE!